



---

***Y PWYLLGOR  
CYNLLUNIO***

***29 MEHEFIN 2017***

***RHANBARTH Y DE***

**PLANNING  
COMMITTEE**

**29 JUNE 2017**

**AREA SOUTH**



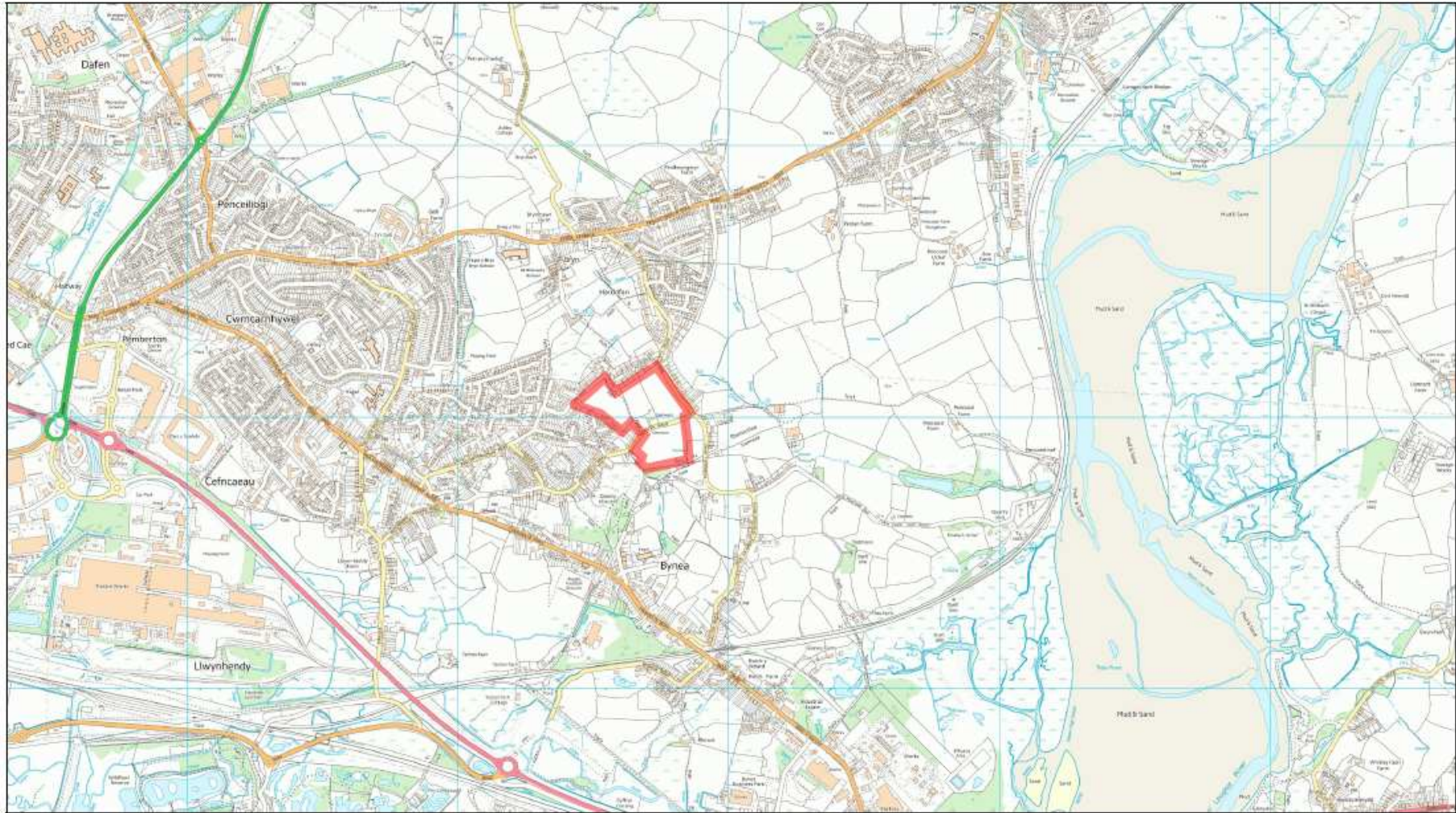
***CEISIADAU YR ARGYMHELLIR EU  
BOD YN CAEL EU CYMERADWYO***

**APPLICATIONS RECOMMENDED  
FOR APPROVAL**



**S/33342**

# S/33342



**S/33342**



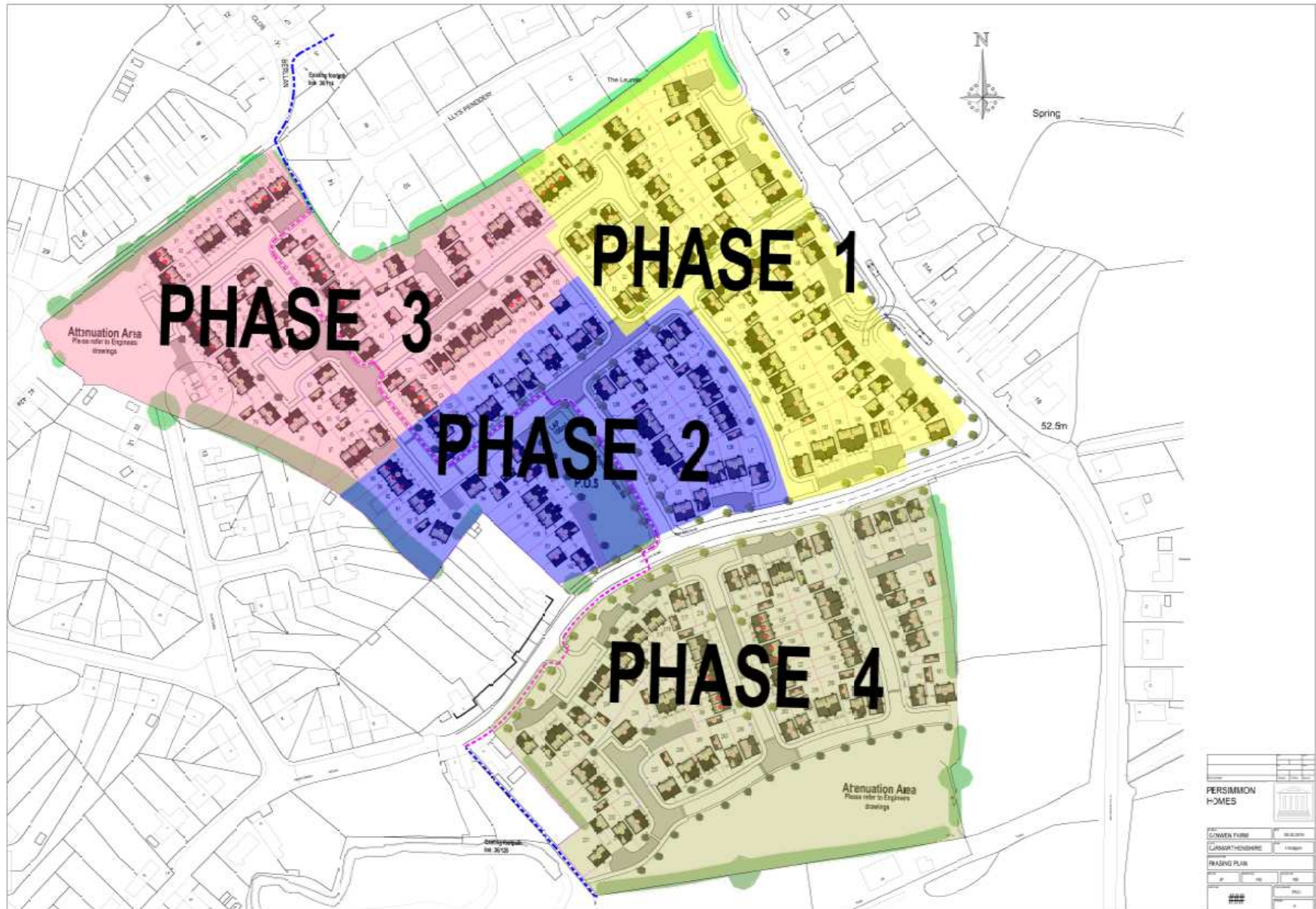
# S/33342



# S/33342



# S/33342







# S/33342



# S/33342



# S/33342



**SOFT LANDSCAPE KEY**

- PROPOSED TREEMEMBERS TO BE REPLACED  
(Refer to Plant Schedule for species details)
- PROPOSED MATURE TREE PLANTING  
(Refer to Plant Schedule for species details)
- PROPOSED ORNAMENTAL TREE PLANTING  
(Refer to Plant Schedule for species details)
- PROPOSED BROADLEAF PLANTING  
(Refer to Plant Schedule for species details)
- PROPOSED SHALB PLANTING  
(Refer to Plant Schedule for species details)
- PROPOSED GRASS PLANTING  
(Refer to Plant Schedule for species details)
- PROPOSED 3m-4m CONIFER PLANTING  
(Refer to Plant Schedule for species details)
- PROPOSED 4.5m-6m CONIFER PLANTING  
(Refer to Plant Schedule for species details)
- PROPOSED 6m-8m CONIFER PLANTING  
(Refer to Plant Schedule for species details)
- PROPOSED 8m-10m CONIFER PLANTING  
(Refer to Plant Schedule for species details)
- PROPOSED 10m-12m CONIFER PLANTING  
(Refer to Plant Schedule for species details)
- PROPOSED 12m-15m CONIFER PLANTING  
(Refer to Plant Schedule for species details)
- PROPOSED 15m-20m CONIFER PLANTING  
(Refer to Plant Schedule for species details)
- PROPOSED 20m-25m CONIFER PLANTING  
(Refer to Plant Schedule for species details)
- PROPOSED 25m-30m CONIFER PLANTING  
(Refer to Plant Schedule for species details)
- PROPOSED 30m-35m CONIFER PLANTING  
(Refer to Plant Schedule for species details)
- PROPOSED 35m-40m CONIFER PLANTING  
(Refer to Plant Schedule for species details)
- PROPOSED 40m-45m CONIFER PLANTING  
(Refer to Plant Schedule for species details)
- PROPOSED 45m-50m CONIFER PLANTING  
(Refer to Plant Schedule for species details)
- PROPOSED 50m-55m CONIFER PLANTING  
(Refer to Plant Schedule for species details)
- PROPOSED 55m-60m CONIFER PLANTING  
(Refer to Plant Schedule for species details)
- PROPOSED 60m-65m CONIFER PLANTING  
(Refer to Plant Schedule for species details)
- PROPOSED 65m-70m CONIFER PLANTING  
(Refer to Plant Schedule for species details)
- PROPOSED 70m-75m CONIFER PLANTING  
(Refer to Plant Schedule for species details)
- PROPOSED 75m-80m CONIFER PLANTING  
(Refer to Plant Schedule for species details)
- PROPOSED 80m-85m CONIFER PLANTING  
(Refer to Plant Schedule for species details)
- PROPOSED 85m-90m CONIFER PLANTING  
(Refer to Plant Schedule for species details)
- PROPOSED 90m-95m CONIFER PLANTING  
(Refer to Plant Schedule for species details)
- PROPOSED 95m-100m CONIFER PLANTING  
(Refer to Plant Schedule for species details)
- PROPOSED 100m-105m CONIFER PLANTING  
(Refer to Plant Schedule for species details)
- PROPOSED 105m-110m CONIFER PLANTING  
(Refer to Plant Schedule for species details)
- PROPOSED 110m-115m CONIFER PLANTING  
(Refer to Plant Schedule for species details)
- PROPOSED 115m-120m CONIFER PLANTING  
(Refer to Plant Schedule for species details)
- PROPOSED 120m-125m CONIFER PLANTING  
(Refer to Plant Schedule for species details)
- PROPOSED 125m-130m CONIFER PLANTING  
(Refer to Plant Schedule for species details)
- PROPOSED 130m-135m CONIFER PLANTING  
(Refer to Plant Schedule for species details)
- PROPOSED 135m-140m CONIFER PLANTING  
(Refer to Plant Schedule for species details)
- PROPOSED 140m-145m CONIFER PLANTING  
(Refer to Plant Schedule for species details)
- PROPOSED 145m-150m CONIFER PLANTING  
(Refer to Plant Schedule for species details)
- PROPOSED 150m-155m CONIFER PLANTING  
(Refer to Plant Schedule for species details)
- PROPOSED 155m-160m CONIFER PLANTING  
(Refer to Plant Schedule for species details)
- PROPOSED 160m-165m CONIFER PLANTING  
(Refer to Plant Schedule for species details)
- PROPOSED 165m-170m CONIFER PLANTING  
(Refer to Plant Schedule for species details)
- PROPOSED 170m-175m CONIFER PLANTING  
(Refer to Plant Schedule for species details)
- PROPOSED 175m-180m CONIFER PLANTING  
(Refer to Plant Schedule for species details)
- PROPOSED 180m-185m CONIFER PLANTING  
(Refer to Plant Schedule for species details)
- PROPOSED 185m-190m CONIFER PLANTING  
(Refer to Plant Schedule for species details)
- PROPOSED 190m-195m CONIFER PLANTING  
(Refer to Plant Schedule for species details)
- PROPOSED 195m-200m CONIFER PLANTING  
(Refer to Plant Schedule for species details)

**PLANT SCHEDULES**

**REPLACEMENT TREES**

Tree ID	Species	Height	Quantity
T01	[Species]	[Height]	[Quantity]

**ORNAMENTAL TREE PLANTING**

Plant ID	Species	Quantity
O01	[Species]	[Quantity]

**MATURE BROADLEAF PLANTING**

Plant ID	Species	Quantity
M01	[Species]	[Quantity]

**SHALB PLANTING**

Plant ID	Species	Quantity
S01	[Species]	[Quantity]

**GRASS PLANTING**

Plant ID	Species	Quantity
G01	[Species]	[Quantity]

**NOTES:**

- C: Check a tree to accommodate [Criteria]
- B: Amend a tree to accommodate [Criteria]
- A: Delete a tree to accommodate [Criteria]

Trees to show available to vendors to be planted within 12 months of Urban Harvest 1000 trial launch.

Proposed plant responses to be produced by 12th April post and will remain on the construction site.

Client: **FORBURN HOBBS WEST WALKS**

Drawn: [Name]

Scale: **1:500 @ A2**

Drawn: [Name]

Date: **JAN 2018**

Project: **GENWEN FARM**

Project Title: **DETAILS SOFT LANDSCAPE PROPOSAL**

# S/33342



# S/33342



# S/33342



PERSIMMON  
HOMES



932	
Souter (Village)	240413
SL-WD16	808@A1 100@A3
Plans & Elevations (Planning)	
	Rev 6

# S/33342





# S/33342



Rev:  
**PERSIMMON  
 HOMES**



835 sqft	
835-WHQS	June 2014
835-WHQS-WD04	80@A1, 100@A3
Plans Elevations & Section (Planning)	
	Rev: -

# S/33342



**S/33342**



**S/33342**



**S/33342**



**S/33342**



**S/33342**



**S/33342**





**S/33342**



**S/33342**



**S/33342**



**S/33342**



**S/33342**



**S/33342**



**S/33342**



**S/33342**





**S/33342**



**S/33342**



**S/33342**



**S/33342**



**S/33342**



**S/33342**



**S/33342**



**S/33342**





**S/33342**



**S/33342**



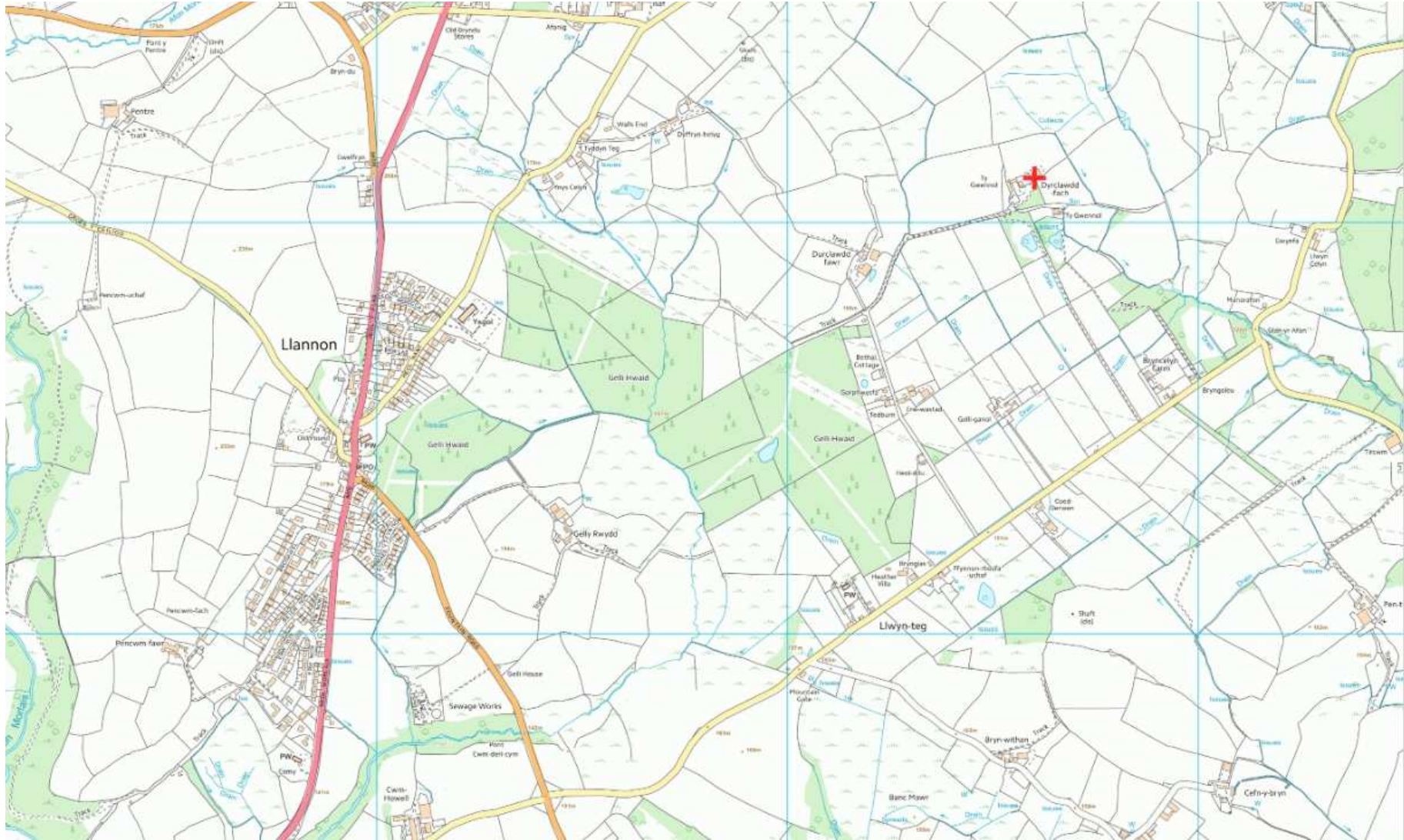
**S/33342**





# S/35029

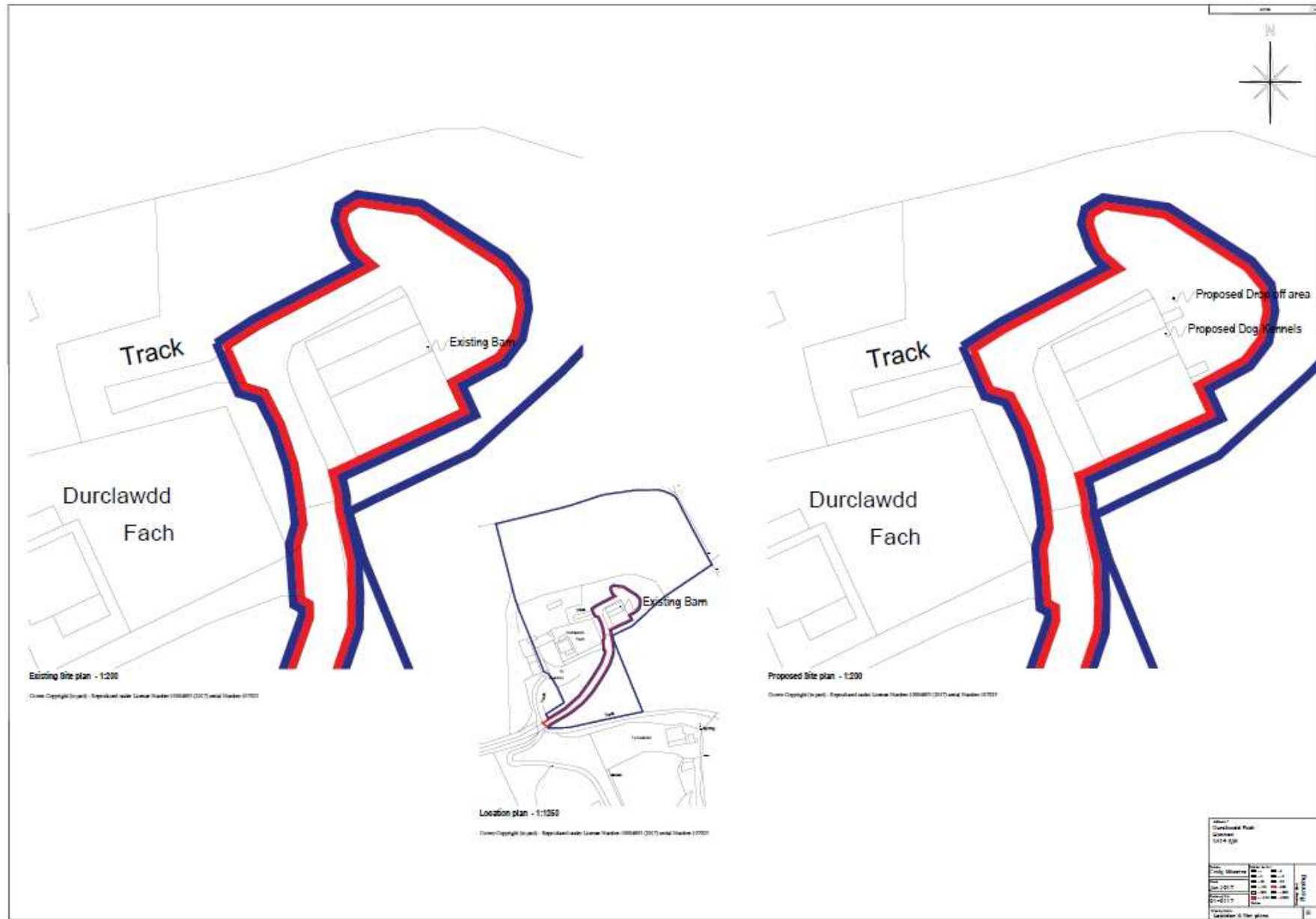
# S/35029



**S/35029**

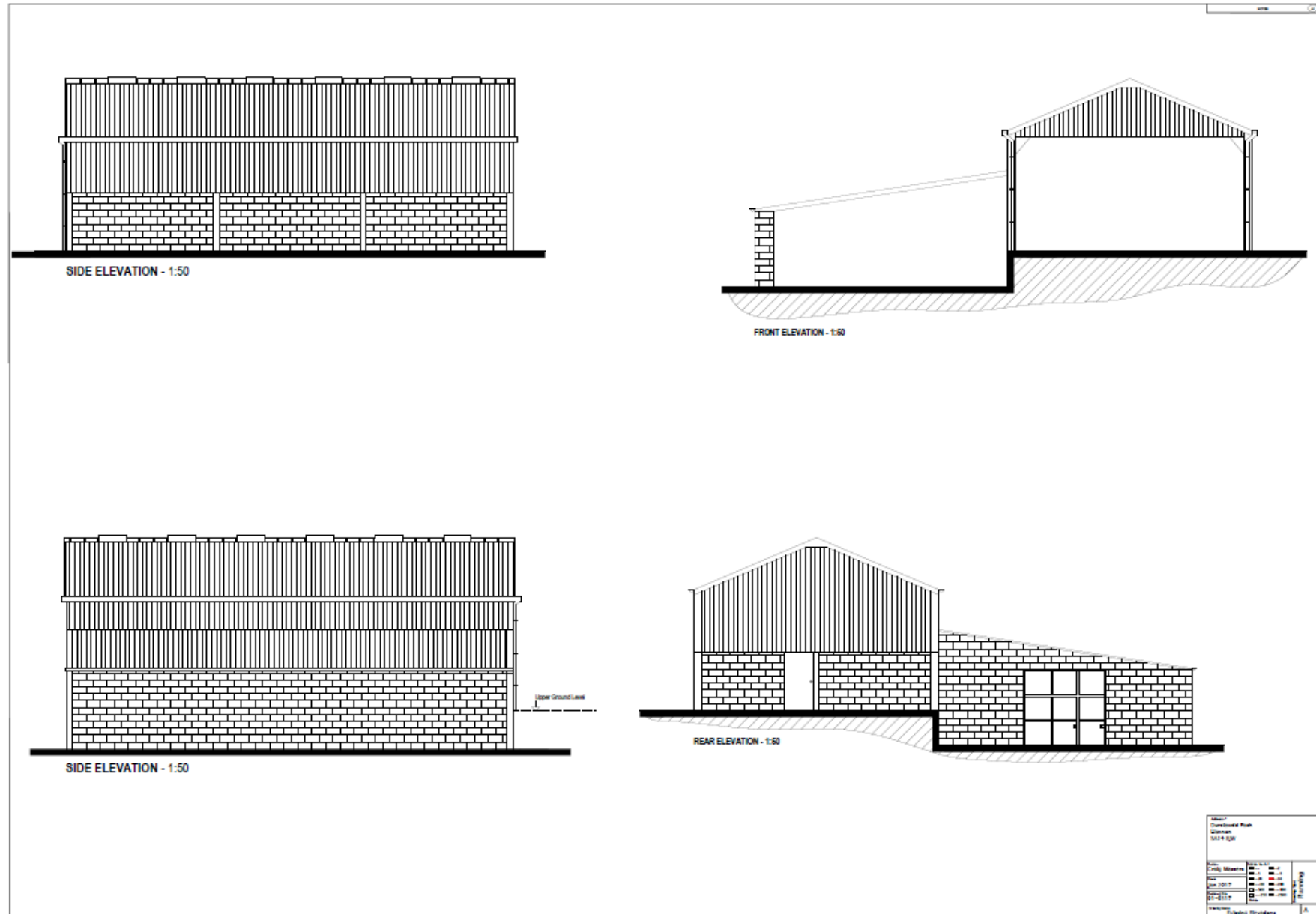


# S/35029



# S/35029

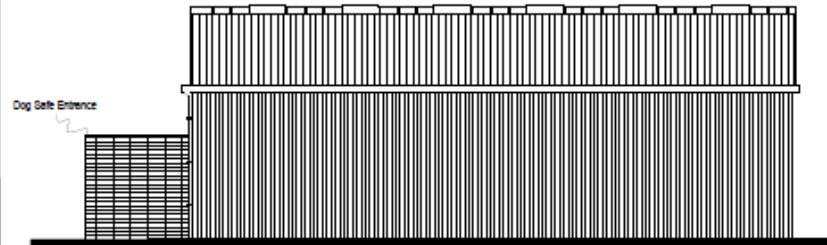
# Existing



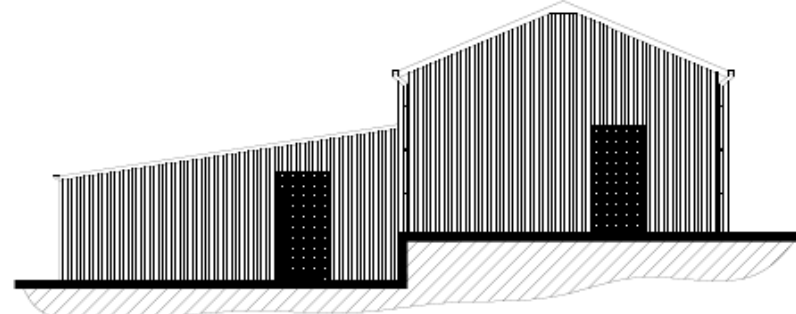


# S/35029

# Proposed

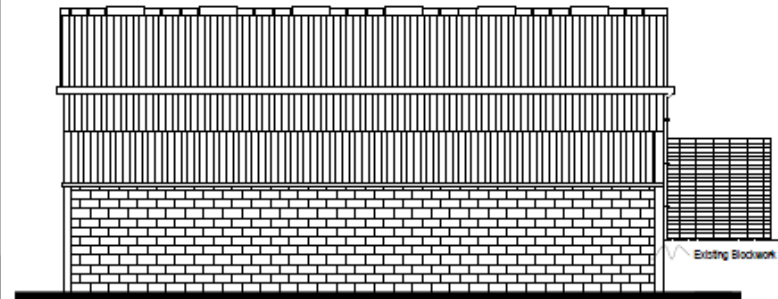


SIDE ELEVATION - 1:50

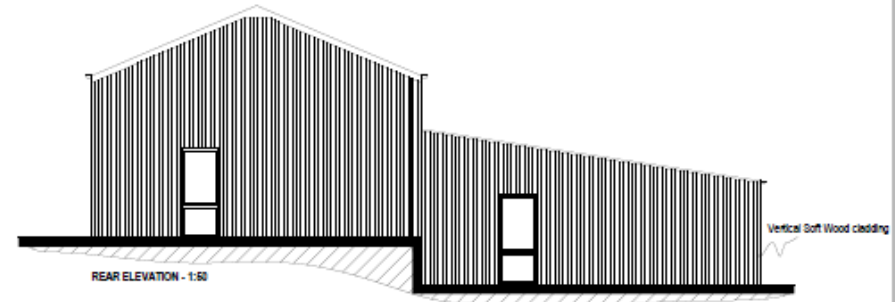


FRONT ELEVATION - 1:50

Schedule of Material Finishes  
External Walls - Vertical Soft Wood Cladding & Existing brick work  
Roof - Existing Corrugated Fibre Cement Sheets Natural Grey  
Doors - Aluminium  
Fascias, soffits, barge boards etc - Existing Natural Grey



SIDE ELEVATION - 1:50



REAR ELEVATION - 1:50

Client:		Dunelmack Park	
Owner:		Gannan	
Date:		10/10/2017	
Scale:		1:50	
Drawing No.:		S/35029	
Project No.:		17/001	
Revision:		A	
Author:		R. Murray	
Check:		A.	
Date:		10/10/2017	

**S/35029**



**S/35029**



**S/35029**



**S/35029**



**S/35029**



**S/35029**



**S/35029**





**S/35029**



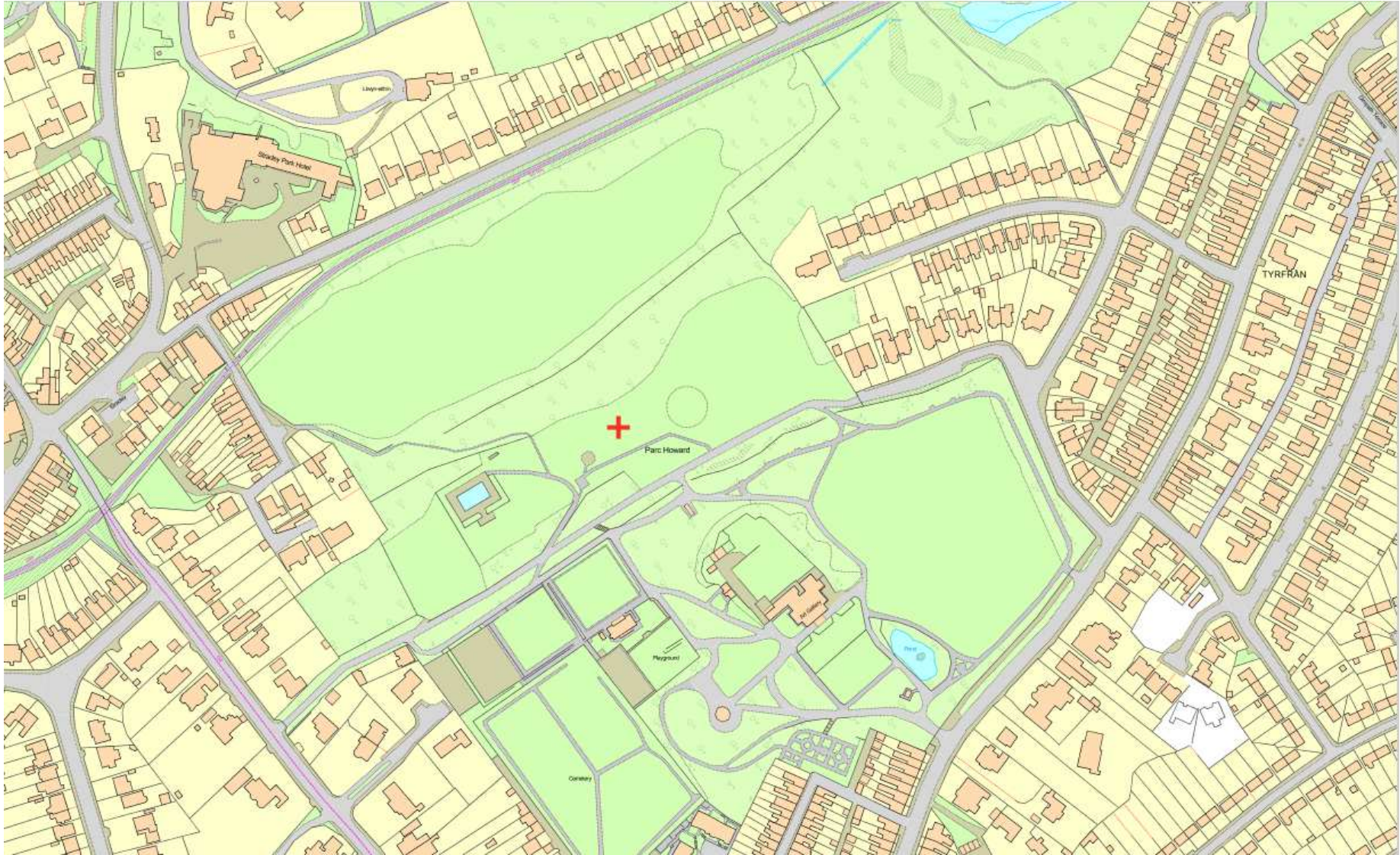
**S/35029**



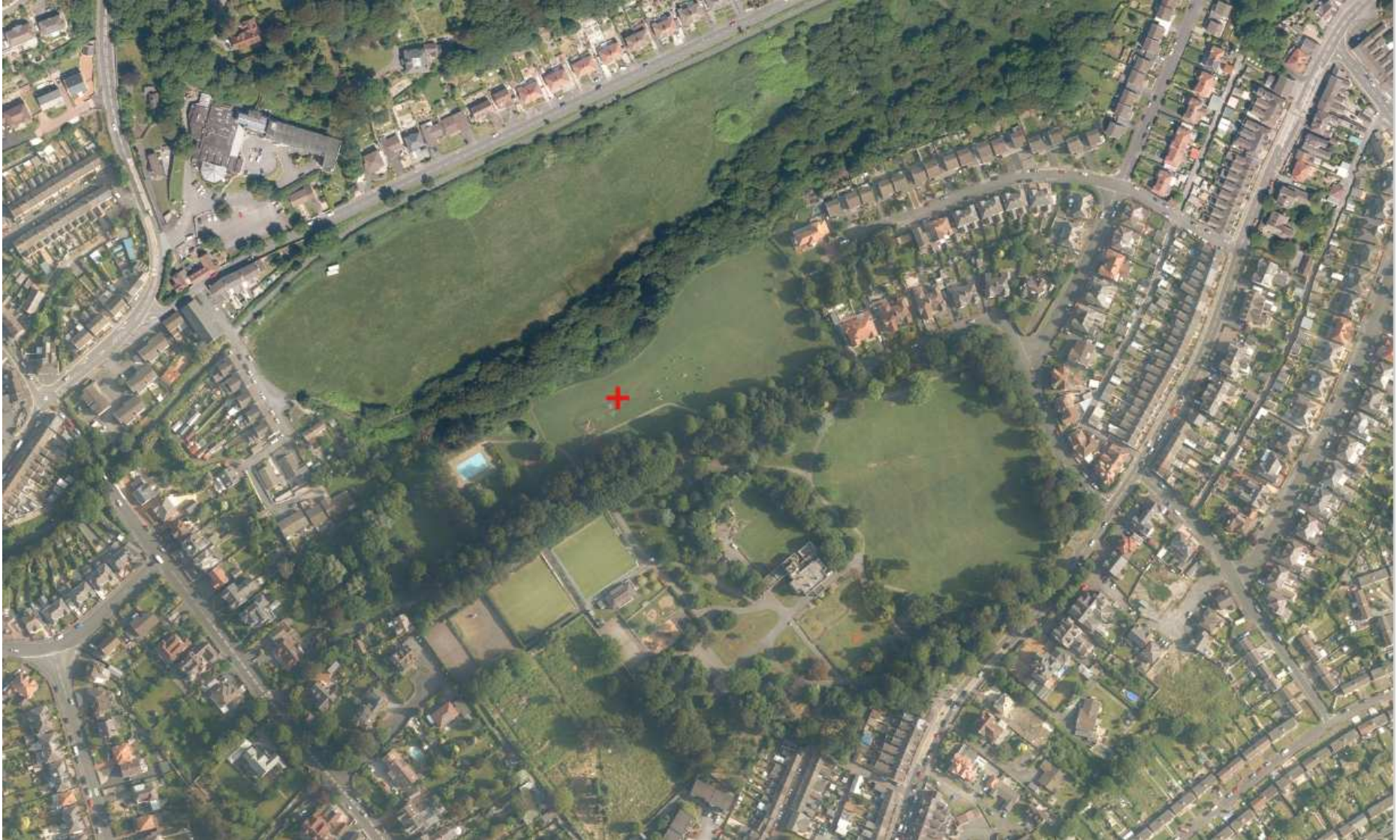


**S/35542**

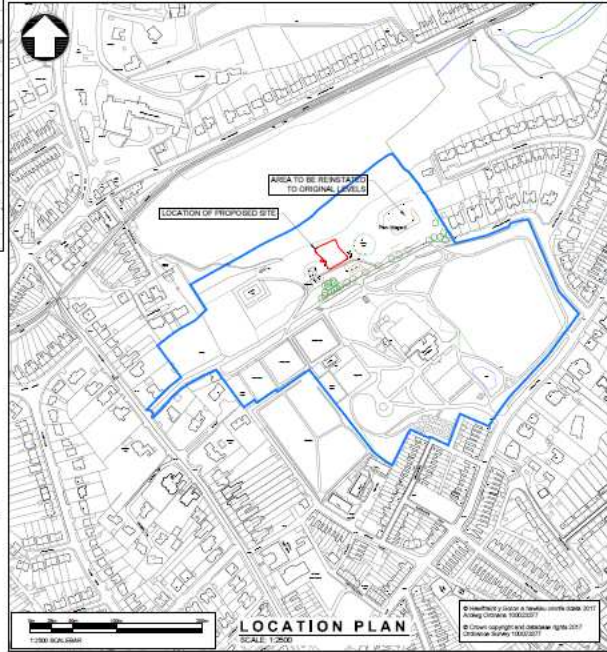
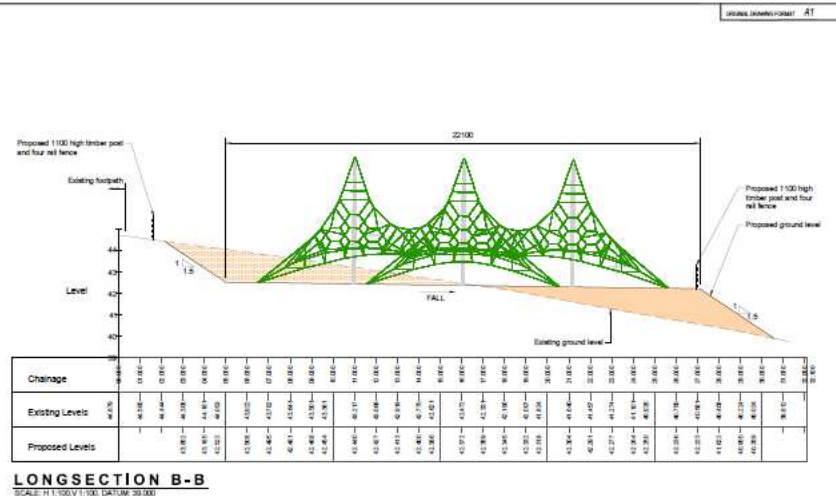
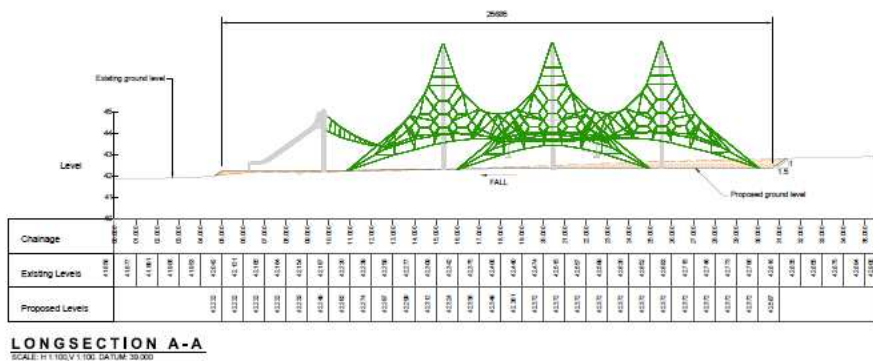
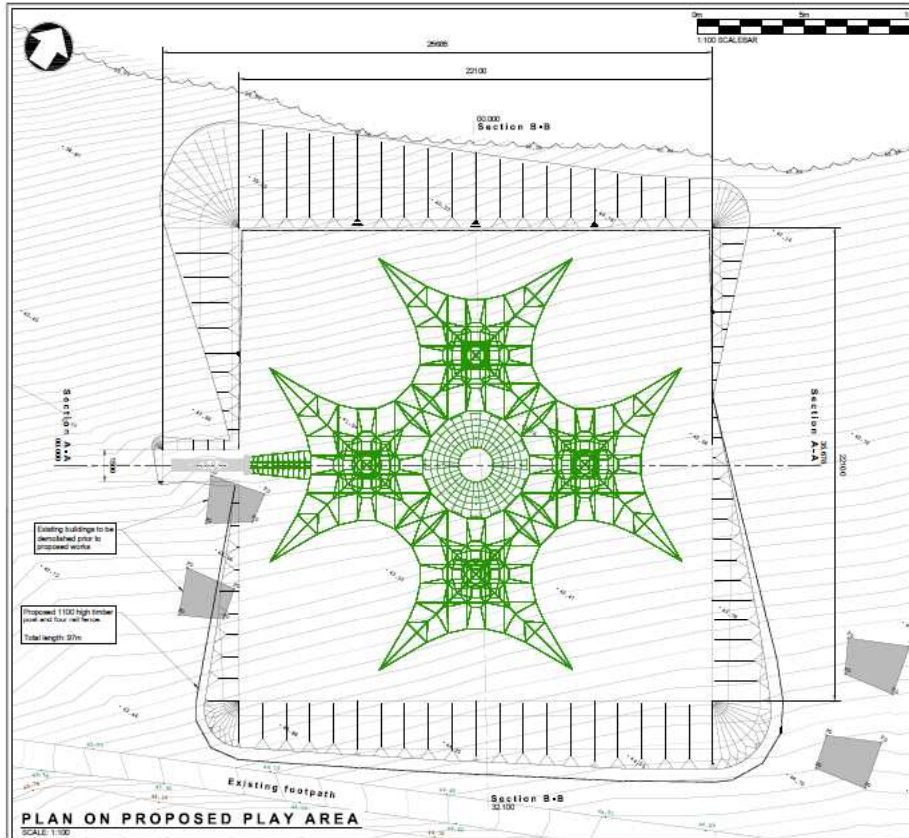
# S/35542



**S/35542**



# S/35542



PLANNING

**Sir Gâr**  
Carmarthenshire  
County Council

Ruth Muller BSc (Hons)  
Cofrewyddwr y Amgylchedd  
is Addysg Pwyllwng a Threfnwrdd,  
Adran Amgylchedd,  
Heuldrô y Sîr,  
Caerfyrddin, Carmarthenshire, SA31 1UP

Director of Environment  
Highways and Transport Division,  
Environment Department,  
County Hall,  
Carmarthenshire, SA31 1UP

**PARC HOWARD PLAY AREA**

**LAYOUT AND PROPOSED DETAILS OF PLAY AREA**

Drawn by	JBW	Date	03.05.17	Checked by	RME	Date	05.05.17
Scale	1:100	Project No.	80.0080.665	Revision			
	1:2500	Drawing No.	PLA 001	Sheet			B

**S/35542**



**S/35542**





**S/35542**



**S/35542**



**S/35542**



**S/35542**



**S/35542**



**S/35542**



**S/35542**

